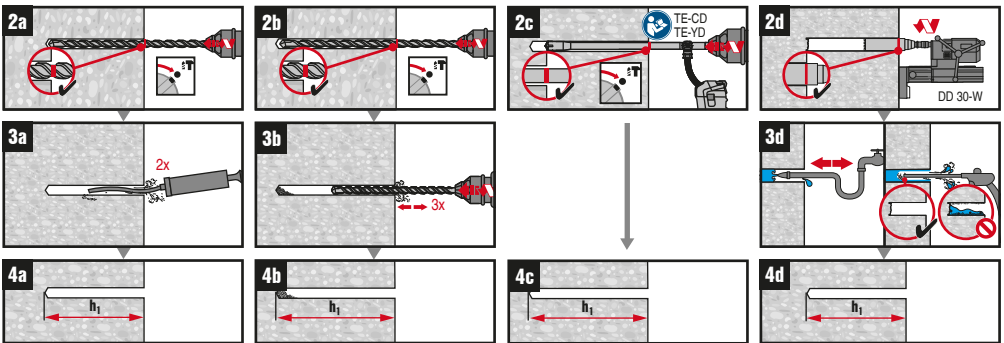


	$h_{nom,1}$ 65mm	$h_{nom,2}$ 85mm	$h_{nom,3}$ 115mm
$t_{fix,min}$	$t_{fix,min,1}$	$t_{fix,min,2}$	$t_{fix,min,3}$
HUS4-A(F) 14x155 M16x47 / 35	30	10	—
HUS4-A(F) 14x185 M16x47 / 35	60	40	10
HUS4-A(F) 14x205 M16x48 / 55	80	60	30

$h_2$	10mm	40mm	10mm	10mm



	HUS4-A(F) 14	
	SIW 22-A 1/2" (01)	
	SIW 6AT-A22 1/2" (01)	
	SIW 22T-A 1/2" (01)	
	SIW 22T-A 3/4" (01)	
	SIW 9-A22 3/4" (01)	

max.  $T_{inst} = 80 \text{ Nm}$